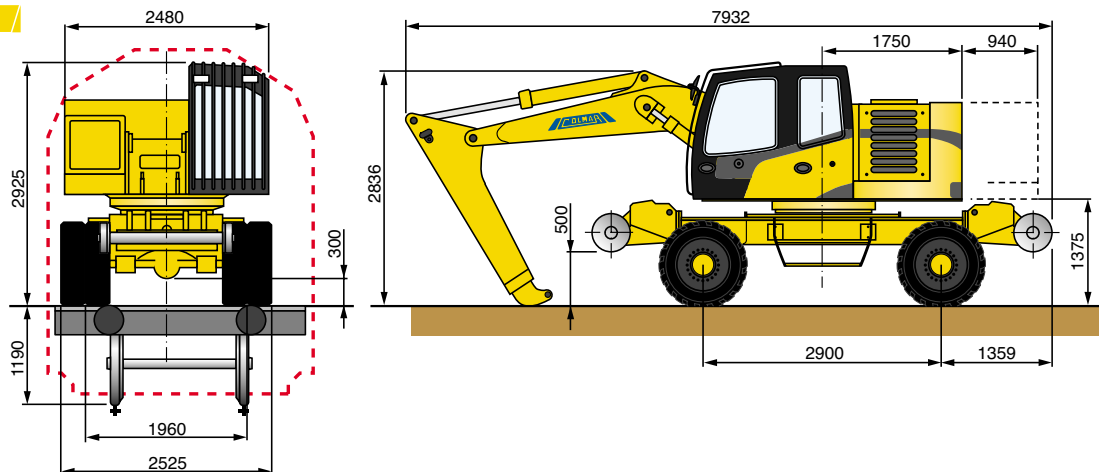


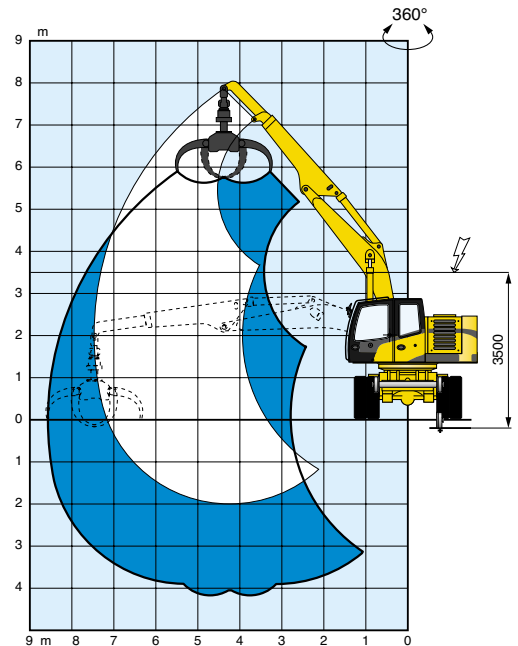
T 10000 FS



COLMAR rail/road loaders are used for the construction and maintenance of railway lines. The machines can be equipped with different accessories: rail pincers, hydraulic or mechanical frame beam for moving sleepers; tamping unit; pincers for different usage; hydraulic hammer; hydraulic bush-grass cutter. COLMAR rail/road loaders are made of a strong electro welded steel and actionned by hydraulic systems realized with high quality components. The loaders are complete with security systems and are homologated to work in different countries.

Dimensions





ROAD/RAIL LOADERS

Weight of the machine	30 Ton
Max lifting load (Road - CD / CE) ¹	7400 daN (7,4 m) / 7500 daN (7,4 m)
Max lifting load (Rail - CD) ¹	7500 daN (7,4 m)
Telescopic counterweight	standard

TECHNICAL SPECIFICATIONS

Diesel engine (DEUTZ)	I.D. Turbo
Engine power	112 Kw - 2300 Rpm
Number of cylinders/cubic capacity	6 / 6472 cm ³
Cooling	air
Engine compartment	sound insulated
Engine supports	vibration damper

HYDRAULIC SYSTEM

Pumps	axial piston double pump - constant press. regulation
Max capacity	184 + 184 L/min
High pressure circuit	flexible hoses / steel
Pipe fittings	ORFS
Hydraulic oil cooling	air-oil heat exchanger
Tyres front and rear tyres	twin tyres 9,00x20 XZM
Service and emergency brake	hydr. pedal control / split circuit on the 4 wheels
Parking brake	hydr. control by a lever in the cab
Brakes on the rail wheels	block braking
Steering	hydraulic / gear pump
Transmission	hydr. by variable displacement axial pistons pump
Hydraulic motor	radial piston hydr. motor on epicyclic reduction gear with epicyclic reduction gears on wheels
Axels	
Front rail axle	swinging / hydraulic cylinders for swinging lock
Front-rear rail boggies	independent / hydraulic control
Gear box	hydraulic with 3 speeds
1st gear; 2nd gear; 3rd gear	4 Km/h; 12 Km/h; 22 Km/h
Driving cab - Seat	steel sheet/sound insulated - adjust. anatomic seats
Fuel tank capacity	130 L
Total capacity hydraulic oil circuit	350 L

¹) CD = Counterweight in CF = Counterweight out

Standard accessories Hydraulic rotator 360° for accessories, lifting hook, 4 wheels drive, electronic system for load control.

Optional Air conditioner, automatic air conditioner, radio, catalytic converter, electronic system for load control, electro hydraulic generator, magnetic plate, tracked model, rear vision electronic device, arm height mechanical limit system.

Road Loaders

HEIGHT (m)	OPERATING RANGE (m)			
	4	5.5	6.4	7.4
6	Long. CD	-	9600	-
	CF	-	9600	-
	360° CD	-	7650	-
	CF	-	9850	-
4.5	Long. CD	-	9600	8600
	CF	-	9600	8700
	360° CD	-	7550	6100
	CF	-	9800	8300
3	Long. CD	12800	9950	8700
	CF	12800	9950	8750
	360° CD	11700	7450	6150
	CF	12800	9650	8150
1.5	Long. CD	14350	10350	8800
	CF	14350	10350	9000
	360° CD	11300	7300	6000
	CF	14350	9500	7900
0	Long. CD	14500	10350	8950
	CF	14500	10350	9050
	360° CD	11150	7250	5950
	CF	14500	9450	7850

Lifting capacity on 360° rotation expressed without safety factors.

Rail Loaders

HEIGHT (m)	OPERATING RANGE (m)			
	4	5.5	6.4	7.4
6	Long. CD	-	9600	-
	360° CD	-	6250	-
4.5	Long. CD	-	9600	8250
	360° CD	-	6200	5300
3	Long. CD	12800	9950	8600
	360° CD	9200	6050	5150
1.5	Long. CD	14350	10350	9000
	360° CD	8800	5900	5000
0	Long. CD	14500	10350	9000
	360° CD	8750	5900	5000

Lifting capacity on 360° rotation expressed without safety factors.

Colmar reserves the right of amending the data contained in this brochure at any time.

COLMAR S.p.a.
 Headquarters Via Nazionale Adriatica n.539/593
 45031 ARQUA' POLESINE (RO) ITALY
 Ph. +39 0425 93 21 33 (Int.4) Fax +39 0425 46 50 52
www.colmarspa.com
colmarspa@colmarspa.com
Export Sales Department:
 Viale dei Colli Euganei, n.88 ap.5-6
 35041 Battaglia Terme (PD) - ITALY
 Ph.: +39 049 910 13 49 Fax : +39 049 911 41 63
www.colmarspa.com export@colmarspa.com

COLMAR USA, Inc.
 U.S.A.
 3790 Commerce Ct., Suite 100
 Wheatfield, New York 14120
1-800-537-5204
 Ph. 716 - 693 - 9877
 Fax 716 - 693 - 9869
www.colmarequipment.com
info@colmarequipment.com
sales@colmarequipment.com
service@colmarequipment.com

COLMAR UK Ltd.
 U.K.
 Unit 10, Wheel Forge Way
 Ashburton Park
 Ashburton Road West, Trafford Park
 Manchester
 M17 1EH
 Ph. **0161 848 8902**
 Fax 0161 848 8903
www.colmarspa.com
colmaruk@colmarspa.com

OOO COLMAR BOCTOK
 RUSSIA 115088 Moscow, Yuzhnoportovaya ul.7
 Ph. +7 095 5405538 Fax +7 095 7100848
www.colmarspa.com info@oocolmar.ru

COLMAR S.p.a. CHINA OFFICE
 CHINA Pride of Times Building,
 Suite No. 1003 Xin Hua Rd. 4, Yu Zhong District,
 400010 Chongqing City, PRC
 Ph. +86 23 63707815 Fax +86 23 63707780
www.colmarspa.com jia@colmarspa.com