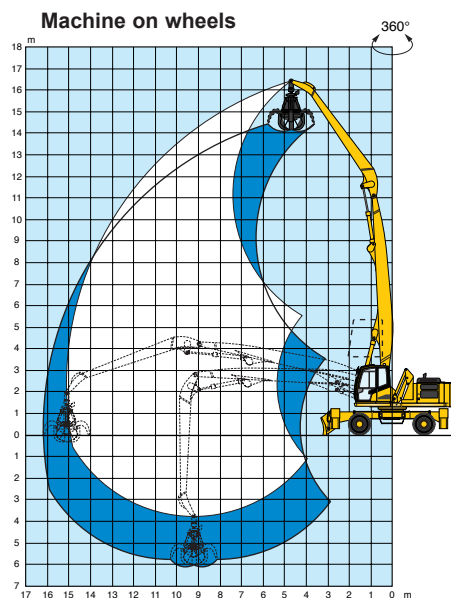
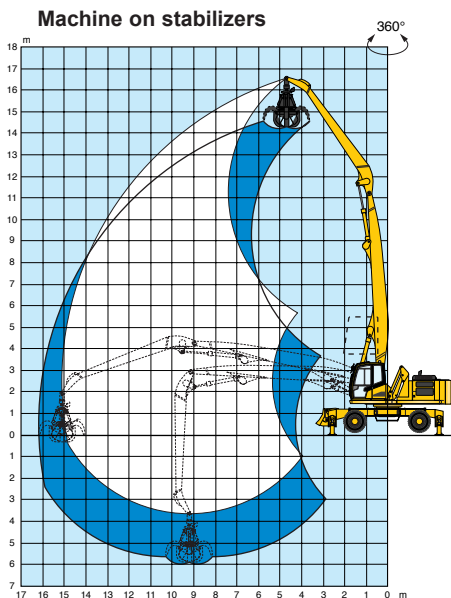




Lifting capacity diagram(s)



Machine on stabilizers

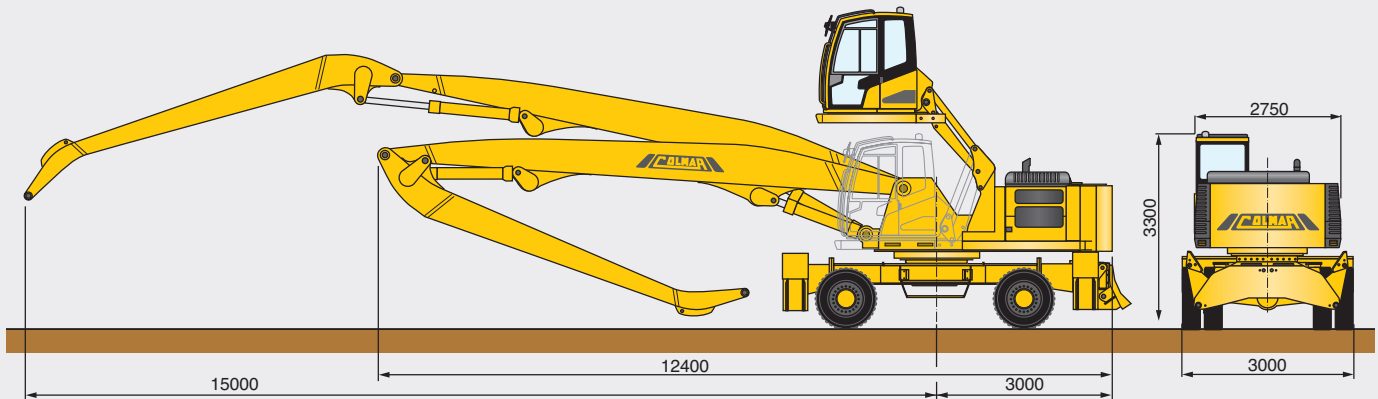
| Height (m) | Reach (m) | | | | | | |
|------------|-----------|-------|------|------|------|------|------|
| | 5.3 | 6 | 8 | 10 | 12 | 14 | 15 |
| 14 | - | - | 7470 | - | - | - | - |
| 12 | - | - | 7220 | 6930 | - | - | - |
| 10 | - | - | 5960 | 5820 | 6030 | - | - |
| 8 | - | - | 6340 | 6030 | 5240 | - | - |
| 6 | - | 8610 | 7070 | 6460 | 5450 | - | - |
| 4 | - | 10610 | 8060 | 7030 | 5440 | 4210 | - |
| 2 | 14690 | 12600 | 9070 | 7240 | 5240 | 4100 | 3660 |
| 0 | - | 13820 | 9650 | 6950 | 5070 | 4010 | - |
| -2 | - | 14030 | 9380 | 6760 | 4960 | 3970 | - |

Lifting capacity around 360° expressed in DaN without safety factor

Machine on wheels

| Height (m) | Reach (m) | | | | | | |
|------------|-----------|------|------|------|------|------|------|
| | 5.3 | 6 | 8 | 10 | 12 | 14 | 15 |
| 14 | - | - | 7470 | - | - | - | - |
| 12 | - | - | 7220 | 6000 | - | - | - |
| 10 | - | - | 5960 | 4890 | 4400 | - | - |
| 8 | - | - | 6340 | 4740 | 3360 | - | - |
| 6 | - | 8610 | 6510 | 4460 | 3210 | - | - |
| 4 | - | 9070 | 5890 | 4110 | 3000 | 2200 | - |
| 2 | 9270 | 7850 | 5260 | 3750 | 2790 | 2080 | 1800 |
| 0 | - | 7070 | 4780 | 3450 | 2600 | 1980 | - |
| -2 | - | 6730 | 4490 | 3250 | 2480 | 1930 | - |

Lifting capacity around 360° expressed in DaN without safety factor



| | | 605 |
|----------------------------------|---|---|
| Operating characteristics | | |
| | Machine weight | 39 ton |
| | Max lifting arm capacity/boom extension | 3660 daN / 15 m |
| | Loading boom | fixed L: 15 m |
| Technical characteristics | | |
| | Diesel engine | Turbo-charged D. I. (Perkins) |
| | Engine power | 186 kW - 2200 Rpm |
| | N° of cylinders / cubic capacity | 6 / 6600 c.c. |
| | Cooling system | cooling liquid |
| | Engine compartment | sound insulated |
| | Engine supports | damper monted |
| Hydraulic system | | |
| | Pumps | N° 3 axial piston, n° 2 gear |
| | Operating pressure | 300 bar |
| | High pressure system | flexible hoses / tubes |
| | Pipe fittings | ORFS |
| | Oil cooling | air/oil cooler |
| | Front and rear tyres | N°8 solid beads tires, size: 12.00/20 |
| | Service and emergency brakes | pedal operated hydraulics |
| | Parking brake | mechanical |
| | Power steering | gear pump |
| | Transmission | 4 wheel drive |
| | Hydraulic motor | variable disp. axial pistons |
| | Axles | epicyclic reduction gear (hubs) |
| | Swing axle locking | hydraulic |
| | Speed first gear | 0-5 km/h |
| | Speed second gear | 0-12 km/h |
| | Sound insulated cabin | pantograph hydraulic elevation |
| | Seat | anatomically adjustable |
| | Fuel tank capacity | 310 L |
| | Hydraulic oil tank capacity | 400 L |
| Accessories | | |
| | Standard | FB - RS - FS - 4WD - MCG |
| | Optional | AC - R - ACG EG (11 - 15 kW) MP (Ø1250 - 1450 mm) |


AC = Air conditioner, R = Radio, EG = Electro hydraulic generator, FB = Front hydraulic blade, MP = Magnetic plate, FS = Front hydraulic stabilizers, RS = hydraulic rear stabilizers, 4WD = 4 wheel drive, MCG = Manual centralized greasing system, ACG = Automatic centralized greasing system.

Colmar reserves the right to amend the data contained within this brochure at any time.

 **COLMAR S.P.A.**
Headquarters
Via Nazionale Adriatica n.539/593
45031 Arquà Polesine (RO) ITALY
Tel. +39 0425 93 21 33 (Int. 4)
Fax +39 0425 46 50 52
www.colmarspa.com
colmarspa@colmarspa.com

 **COLMAR USA, Inc.**
U.S.A.
3790 Commerce Ct., Suite 100
Wheatfield, New York 14120
1-800-537-5204
Ph. 716 - 693 - 9877
Fax 716 - 693 - 9869
www.colmarequipment.com
info@colmarequipment.com
sales@colmarequipment.com
service@colmarequipment.com

 **COLMAR UK Ltd.**
U.K.
Unit 10, Wheel Forge Way
Ashburton Park
Ashburton Road West, Trafford Park
Manchester M17 1EH
Ph. **0161 848 8902**
Fax 0161 848 8903
www.colmarspa.com
colmaruk@colmarspa.com

 **OOO COLMAR БОСТОК**
RUSSIA
115088 Moscow,
Yuzhnoportovaya ul.7
Ph. +7 095 5405538
Fax +7 095 7100848
www.colmarspa.com
info@oocolmar.ru

